

# Newsletter

22nd May 2026

What a fantastic week we have had in school, filled with creativity, discovery, outdoor learning and exciting experiences across all classes!

Class 2 have been working incredibly hard on their writing this week, creating their own individual stories linked to our Talk for Writing text. It has been wonderful to see the children using their creativity, vocabulary and storytelling skills so confidently.

Classes 3 and 4 enjoyed a fascinating lesson in pond dipping led by a wonderful team of river volunteers. The children explored the pond habitat using nets and identification charts, searching for pond creatures and vegetation before learning how to group and identify their discoveries. They compared life found in still water with samples brought from a local river, helping them understand the differences between pond and river ecosystems. Indoors, the children were captivated by a microscope and TV set-up that revealed the hidden microscopic world within the pond water. They also watched a time-lapse clip showing frogspawn developing into tiny tadpoles, sparking lots of awe and curiosity about the natural world. There was great excitement around the possibility of spotting some especially unusual pond creatures – with hopes high for a tardigrade sighting!

It has been another joyful week of learning across the school, and we are incredibly proud of all the children for their enthusiasm, curiosity and positive attitudes.

We hope you all have a lovely half term, Mrs Manning.

## Attendance

This week's attendance is

Whole School: 97%

Class 1: 99%

Class 2: 96%

Class 3: 94%

Class 4: 98%

Class 1 enjoyed a very colourful "Purple Day" on Wednesday inspired by the story Mabel Murple. The children explored colour mixing activities and had great fun learning about Mabel and her entirely purple world – from her purple house to her purple poodle and even her purple motorcycle! The day was full of creativity, imagination and lots of purple fun.



**Courage**

**Ambition**

**Kindness**

## Upcoming Events

Tuesday 2<sup>nd</sup> June - Class 4 Swimming  
Wednesday 3<sup>rd</sup> June - School Photographer  
Thursday 4<sup>th</sup> June - Goblin Car Race Day  
Friday 5<sup>th</sup> June - Class 3 Trip to Xplore Wrexham  
Tuesday 9<sup>th</sup> June - Class 4 team Rounders at Lydbury North a.m.  
Tuesday 9<sup>th</sup> June - Class 4 Swimming p.m.  
Friday 12<sup>th</sup> June - Pyjamarama Reading Event & Author Visit  
Tuesday 16<sup>th</sup> June - Class 4 Swimming  
Wednesday 17<sup>th</sup> June - Class 4/Year 4 Forest School  
Tuesday 23<sup>rd</sup> June - Class 4 Swimming  
Wednesday 24<sup>th</sup> June - Class 2 trip to Ludlow Castle  
Wednesday 24<sup>th</sup> June - Class 3 Forest School  
Thursday 25<sup>th</sup> June - Year 6 Leavers Service Hereford Cathedral  
Tuesday 30<sup>th</sup> June - Sports Day Afternoon  
Wednesday 1<sup>st</sup> July - Class 1 Trip to Park Hall  
Tuesday 7<sup>th</sup> July - Class 4 Swimming  
Tuesday 14<sup>th</sup> July - Class 4 Swimming  
Thursday 16<sup>th</sup> July - Class 3 Swimming

## Summer

Starts 13.04.26  
Half Term 25.05.26-29.05.26  
PD Day Mon 1st June 2026  
Ends 17.07.26

## Autumn

PD Days Tues 1<sup>st</sup> & Wed 2<sup>nd</sup> Sept 2026  
Starts Thurs 3<sup>rd</sup> Sept 2026  
Half Term 26.10.26 - 30.10.26

## Goblin Car Time Trials at Bishop's Castle

Our Goblin Car team have had an exciting week too!  
The children painted their car and then travelled to the Community College to take part in time trials. They showed fantastic teamwork, determination and enthusiasm throughout the event, and we are very proud of their efforts.



## Class 4 Forest School

Class 4 attended Forest School this week, where they worked creatively with clay in the woodland environment. The children showed wonderful imagination and teamwork while connecting with nature through hands-on outdoor learning experiences.



## 2026 - The Year Of Reading



### Week 16 - Reading in Everyday Life

Recipes, signs, schedules and instructions all involve reading.

**At home:** Read everyday text together during routines.

**Recommended read:** The Secret Zoo – adventure and curiosity combined.

## Pond Dipping





# Half Term Holiday Clubs 09:00 - 15:00

*For children aged 5 to 11, our holiday clubs are open to all abilities with a focus on fun and sports! Groups of mixed age and ability.*

## Shrewsbury

The Croud Meadow, SY2 6ST

Tuesday 26th May

Wednesday 27<sup>th</sup> May

Thursday 28<sup>th</sup> May

Friday 29<sup>th</sup> May



01743 289177 opt 6



admin@foundationstfc.co.uk



foundationstfc.co.uk/fun

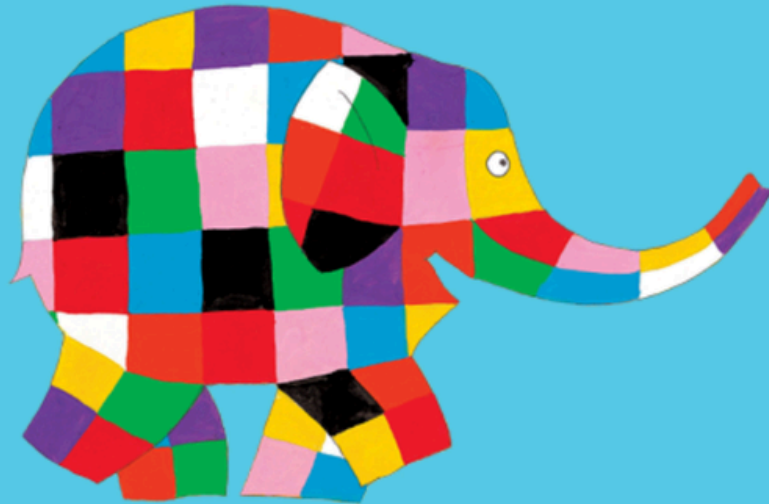
Scan the QR code or visit our website to book, single day from £18.00.





# ELMER

## STORY & ACTIVITY MORNING AT BISHOP'S CASTLE LIBRARY



**TUESDAY 26<sup>TH</sup> MAY 2026**

**10.30AM - 12.30PM**

**WEAR YOUR BRIGHTEST CLOTHES  
AND JOIN US TO CELEBRATE ELMER DAY 2026  
STORY READING AT 10.30AM FOLLOWED BY  
CRAFTS AND ACTIVITIES.**

**FREE TO ATTEND**





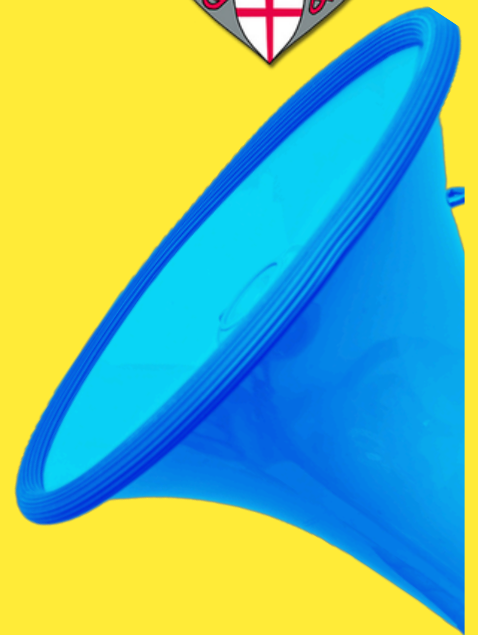
St George's C of E School PTA  
invites you to a

# JUMBLE SALE



## & POP-UP CAFÉ

50p adult entry  
Children free  
Cash only please



-HOUSEHOLD GOODS - TOYS -  
CLOTHING - POSH RAIL - & MORE -



# 6-7 JUNE

13:00 -  
15:00

Haselhurst Close Hall, Clun, SY7 8LQ

Charity Number: 1046587





# EARLY HELP DROP IN

## Bishops Castle Food Bank

Apr Tuesday 7<sup>th</sup> 09:30 am - 10:30 am

May Tuesday 5<sup>th</sup> 9:30 am - 10:30 am

June Tuesday 2<sup>nd</sup> 9:30 am - 10:30 am

July Tuesday 7<sup>th</sup> 09:30 pm - 10:30 am

August Tuesday 4<sup>th</sup> 09:30 - 10:30 am

**Church Lane, Bishops Castle, SY9 5AF**

All families within the local area welcome

**Free information, support  
& advice around:**

Family Life

Housing & Finance

Special Education Needs and/or

Disabilities (SEND)

Parenting Support

Training & Employment

Domestic Abuse Support

And much more...

Refreshments will be provided  
by the food bank



[shropshire.gov.uk/early-help](https://shropshire.gov.uk/early-help)



**Shropshire**  
Council

## Dear Parent or Carer

Free School Meal Holiday Vouchers were funded through the Government's Household Support Fund. This ended on the 31st March 2026. This means that the May half term vouchers will be the last to be issued.

Instead, families will be able to access lots of support through the new Crisis and Resilience Fund. This can help with one-off payments for unexpected financial shocks.

We will also be investing in services that can help maximise income, give budgeting and debt advice, and build longer-term financial resilience.

Information on all of this help is available through our cost-of-living support pages:  
or Google "Shropshire Cost of Living"



## Further cost of living support

What help is there?

If you need support during the current cost of living crisis, or have experienced a recent financial shock, lots of help and advice can be found at - <https://next.shropshire.gov.uk/cost-of-living-help/>

---

This help is available to low-income households but is not just for those on benefits.



# PYJAMARAMA

## READING EVENT

Friday  
12<sup>th</sup> June



Join us in celebrating Pyjamarama by **wearing your pyjamas for the day.**

Thousands of children all around the country – will spend the day reading, enjoying, and sharing stories all in the comfort of their pyjamas.



We are really excited to announce that **West End actress and children's author, Emma Swan** will be visiting.

She will be delivering a fun-filled, action-packed assembly to all the children talking to them about her life growing up on a cruise ship and about her books and life as an author.



**EMMA SWAN**  
is coming to visit on  
12/06/26



Pre-order your books here



Scan the QR code or contact  
Vikki Burgoyne  
07751331933  
burgoyne.books@hotmail.com

★ CELEBRATING STORIES, SPARKING IMAGINATION! ★